



Pathways2Life

Rethinking Prevention

**For more information on our programs or to register for
our parent workshops, please scan this code.**





Northview High School
Counseling Department

Senior Information Meeting Class of 2026

Don't forget to follow us on Instagram!
[@Northviewcounseling](#)

Topics for Discussion

- Meet Your Counselors
- Graduation Requirements
- Researching Colleges
- College Admission Standards
- College Application Process
- Transcript Request Procedure
- Scholarships & Financial Aid
- Resources

Counselors and Administrators

2025-2026 Northview High School Administration, Counseling, and Support Staff

Mr. Martin Neuhaus Principal Ext. 43843 (Ritu x43829) NeuhausM@fultonschools.org	Ms. Tiffany Butera Curriculum Administrator Ext. 43759 Butera@fultonschools.org
Dr. Christi Bounds, Assistant Principal <i>Math and CTAE</i> Ext 43832 A - Ci BoundsC1@fultonschools.org	Ms. Cara Dunn Head Counselor Ext. 43716 A - Ci DunnC1@fultonschools.org
Ms. LeMetra Dismuke, Assistant Principal <i>3DE, Language Arts, and ESOL</i> Ext. 43830 Cl - Jh Dismuke@fultonschools.org	Ms. Cindy Choung Counselor Ext. 43836 Cl - Jh ChoungC@fultonschools.org
Ms. Marisa DiSano, Assistant Principal <i>Science and Special Education</i> Ext. 43831 Ji-Mc DisanoM@fultonschools.org	Mr. Andy Alhadeff Counselor Ext. 43717 Ji - Mc AlhadeffA@fultonschools.org
Mr. Rodney Jones, Assistant Principal <i>Social Studies and World Language</i> Ext. 43834 Me-Se JonesRo@fultonschools.org	Ms. Anna Rhodes Counselor Ext. 43839 Me-Se RhodesA2@fultonschools.org
Dr. Megan Ames, Assistant Administrator Fine Arts, 504, and MTSS Ext. 43710 Sh-Z Ames@fultonschools.org	Ms. Savannah Wilkerson Counselor Ext. 43837 Sh - Z WilkersonSJ@fultonschools.org

Ms. Jasmine Jones Social Worker Ext. 43712 JonesJC@fultonschools.org
Ms. Kelly Angel Registrar Ext. 43711 AngelK@fultonschools.org
Ms. Taryn Woolstenhulme Counseling Clerk Ext. 43838 WoolstenhulT@fultonschools.org

Graduation Requirements

ENGLISH 4 UNITS	MATHEMATICS 4 UNITS	SCIENCE 4 UNITS	SOCIAL STUDIES 3 UNITS	HEALTH/PERSONAL FITNESS 1 UNIT	ADDITIONAL CREDITS 4 UNITS
English Fall 9	Fall	Biology Fall	American Govt. (1 semester)	General Health	Fall
English9 Spring	Spring	Biology Spring	World History Fall	Personal Fitness	Spring
English 10 Fall	Fall	Science/Physics Physical Fall	World History Spring	World Language/Fine Arts/Career Tech 3 UNITS (any combination)	Fall
English 10 Spring	Spring	Science/Physics Physical Spring	US History Fall	Fall	Spring
English 11 Fall	Fall	Chem/Earth/Env Sci /AP Sci Fall	US History Spring	Spring	Fall
English 11 Spring	Spring	Chem/Earth/Env Sci /AP Sci Spring	Economics (1 semester)	Fall	Spring
English12 Fall	Fall	Fall		Spring	Fall
English12 Spring	Spring	Spring		Fall	Spring
				Spring	

Post- Secondary Options

- Gap Year
- Military
- Workforce
- Technical/Trade School
- Two-Year and Four-Year College/University

Post- Secondary Options (continued)

Gap Year

A GAP Year is a period in which recent graduates take a yearlong break to engage in other educational and/or meaningful experiences or activities such as:

- Experiencing new cultures through travel.
- Joining the Peace Corps or other service/volunteer programs.
- Participating in a Gap Year Program such as college bridge year programs.

A Gap Year should not be seen as a period in which a student does nothing. Students should intentionally plan for their Gap Year and seek out opportunities that will add to their personal and or educational development and growth. Students who take a GAP year can still apply to college and defer their admissions.

Military

The military offers access and training for hundreds of careers! By joining one of the US Armed Forces, students will not only earn a salary but benefits, money for college, and the opportunity to travel.

Requirements: Armed Services Vocational Aptitude Battery (ASVAB) scores determine qualifying careers

More Information:

<https://www.todaysmilitary.com/ways-to-serve/service-branches>

<https://www.defense.gov/About/our-forces/>

Narrowing Down Your College List

- Research Colleges and Universities
 - Virtual Tours & Representative Visits
 - Consider location (In-state/Out-of-state)
 - Consider schools that match your personality, interests, and career goals
- How Many?
 - Narrow your list to somewhere around 4-8 colleges
 - List should be balanced, including safety, target and reach schools.
- Check Admissions Data
 - View the school profiles and compare the admissions data to your own academic record and test scores.
- *Where You Go Is Not Who You'll Be* by Frank Bruni

Where Should I Apply?

Dream/Reach School

- Less than 30% chance of admission
- Your Academic Record/Test Scores are below average

Target/Good Fit School

- 30%-60% chance of admission
- Your Academic Record/Test Scores are in line with average

Safety School

- Greater than 60% chance of admission
- Your Academic Record/Test Scores are above average
- You should have at least **one** safety school

A highly selective school should not be considered a safety or target school

College Admission Standards

How Am I Being Evaluated/Application Components

- **Numeric Average** – Typically a recalculated average of all academic core courses on a 4.0 scale (English, Math, Science, Social Studies, and World Language).
- **Course Selection (rigor; difficulty level)** – Colleges are looking at the strength of your courses throughout high school, including your senior year.
- **Test Scores (SAT and/or ACT)** - Please check the institutions' admissions page for additional info regarding test optional. Students are responsible for sending their official standardized test score to the college/university.
- **Extracurricular Activities/Community Involvement/Volunteer/Awards/Recognition** – Leadership and participation in clubs, service, and sports can be particularly important to competitive colleges.
- **Essays** – Required essays on the college application are important because they demonstrate your writing ability and give the college more information about you. Please seek advice when writing an essay and be sure to proofread for errors.
- **Letters of Recommendation** – Most committees prefer letters from core academic teachers in your junior or senior year. Some college/universities will require a counselor letter of recommendation.
- **Interviews**

Numeric Average/Grade Point Average

- Contact each college/university to determine how the numeric average/GPA is calculated
- Most colleges use the following to calculate numeric average onto a 4.0 GPA scale: A = 4.0, B = 3.0, C = 2.0, D = 1.0, F = 0.0
- Most colleges only consider academic courses (ELA, Math, Science, Social Studies, World Language)
- Some colleges/universities may remove the additional 7 points added for Honors, AP and college courses

High School GPA used for postsecondary admissions on a 4.0 scale is calculated by the postsecondary institution, not the high school (Fulton County does not calculate).

Types of Admission

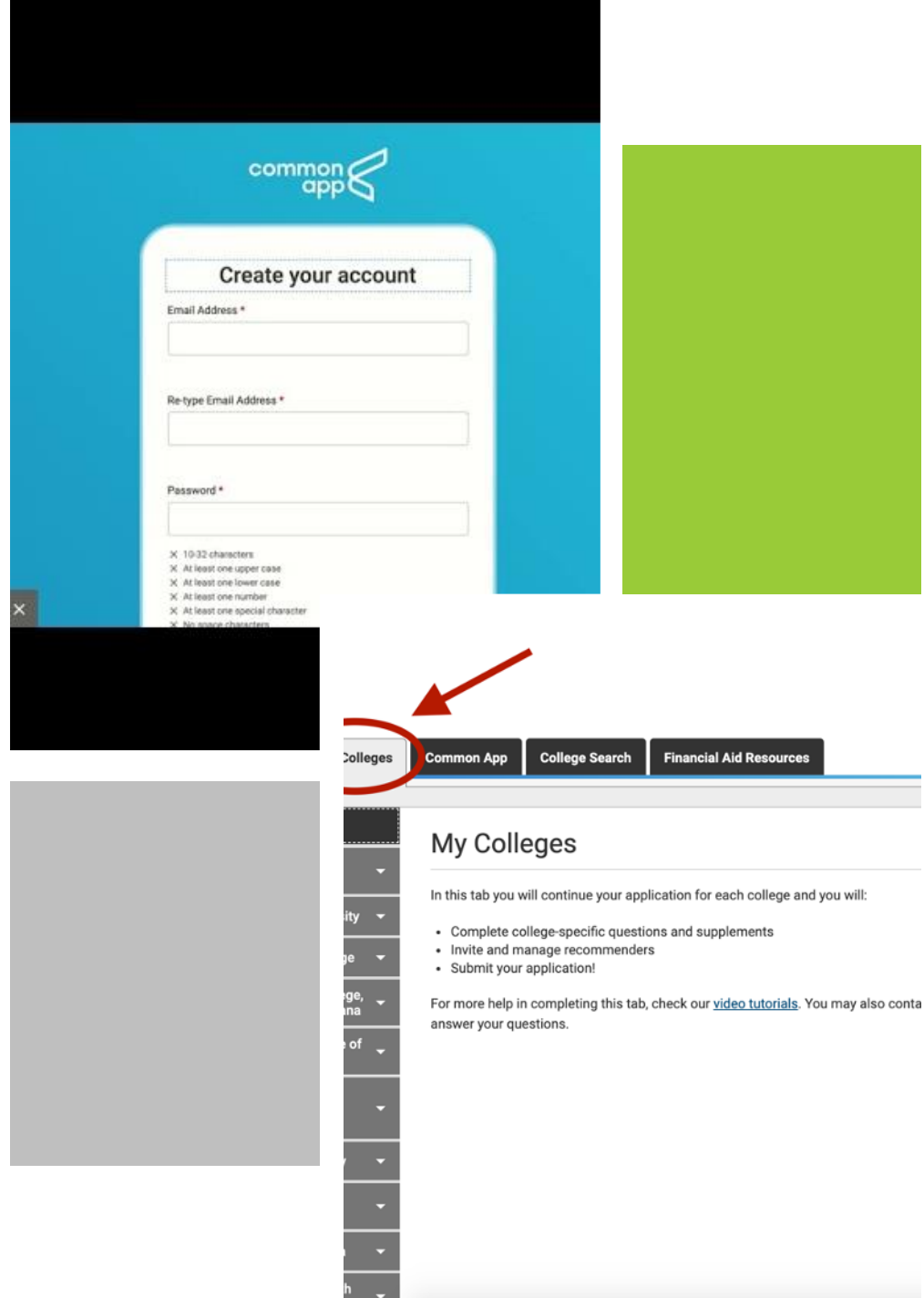
- **Early Action** – Invites early applications and receives early notice of decision. If accepted, ***student is not obligated to attend.***
- **Early Decision** – Invites early applications and receives early notice of decision. If accepted, ***student is obligated to attend and withdraw all other applications. Students may only apply to ONE early decision school.***
- **Regular Decision** – applying during regular admission, not early. Deadlines typically begin in January.
- **Rolling Admissions** – applications are reviewed as they're sent in; there is no hard deadline by which you need to submit your application.

Common App: Creating an Account and Adding Colleges

Use your personal email address
when creating an account

Link for how to get started:

<https://www.commonapp.org/apply/first-year-students>



Requesting LORs from Non- NHS and NHS Recommenders for Common App

- Log in to Common App
- Click My Colleges Tab
- Click College Name
- Click “Recommenders and FERPA”
- Complete your “Release Authorization”
- Click “Invite Recommenders”
- Under the Teacher section, type in Teacher’s email address

*For all non-Common App schools, you must follow the college's procedures for mailing, emailing, or uploading LORs. You are responsible for managing this process.

*You will only need to do the FERPA Agreement once.

Common App: Letters of Recommendation

The screenshot displays the Common App user interface. At the top left is the 'common app' logo. At the top right, a welcome message for 'Thetal' is shown, including the role 'Practice Applicant', a link to 'Usage Tips', the CAID number '16821216', and the email 'marianne.stephens@shorelines'. Below the logo and welcome message is a navigation bar with tabs: 'Dashboard', 'My Colleges', 'Common App', 'College Search', and 'Financial Aid Resources'. The 'My Colleges' tab is selected, and a sub-menu on the left lists options for 'Gonzaga University': 'College Information', 'Application', 'Questions', 'Recommendations and FERPA' (which is highlighted with a blue bar), and 'Review and Submit - Common App'. The main content area is titled 'Recommendations & FERPA' and features a section for 'FERPA Release Authorization'. This section includes an information icon, the title 'FERPA Release Authorization', and a paragraph explaining that users must complete the FERPA release authorization process before inviting counselors, teachers, recommenders, parents, or advisors. A link 'Learn more about FERPA' is provided. A blue button labeled 'Complete Release Authorization' is prominently displayed and circled with a red oval.

common app

Welcome, Thetal
Practice Applicant [Usage Tips](#)
CAID 16821216
marianne.stephens@shorelines

Dashboard My Colleges Common App College Search Financial Aid Resources

My Colleges

Gonzaga University

College Information

Application

Questions

Recommendations and FERPA

Review and Submit - Common App

Recommendations & FERPA

FERPA Release Authorization

Before you can invite your counselor, teachers, recommenders, parents, or advisors, you must complete the Family Educational Rights and Privacy Act (FERPA) release authorization process.

[Learn more about FERPA](#)

Complete Release Authorization

Common App LOR (continued)

The screenshot shows the Common App interface. At the top, the 'common app' logo is on the left, and navigation tabs for 'Dashboard', 'My Colleges', 'Common App', 'College Search', and 'Financial Aid Resources' are on the right. The 'My Colleges' tab is active, showing a sidebar with 'Willamette University' selected. The main content area is titled 'Recommendations & FERPA' and includes sections for 'FERPA Release Authorization' (with a 'View Details' link), 'Invite Recommenders' (with a description and a video link), and 'Counselor' (with a description and a 'Download PDF Forms' link).

common app

Dashboard My Colleges Common App College Search Financial Aid Resources

My Colleges

Willamette University ▾

College Information

Application

Questions

✓ Recommendations and FERPA

Review and Submit - Common App

Recommendations & FERPA

✓ FERPA Release Authorization

[View Details ▾](#)

Invite Recommenders

Recommenders are people who will submit forms and information to colleges on your behalf. Check out our [video about recommenders](#).

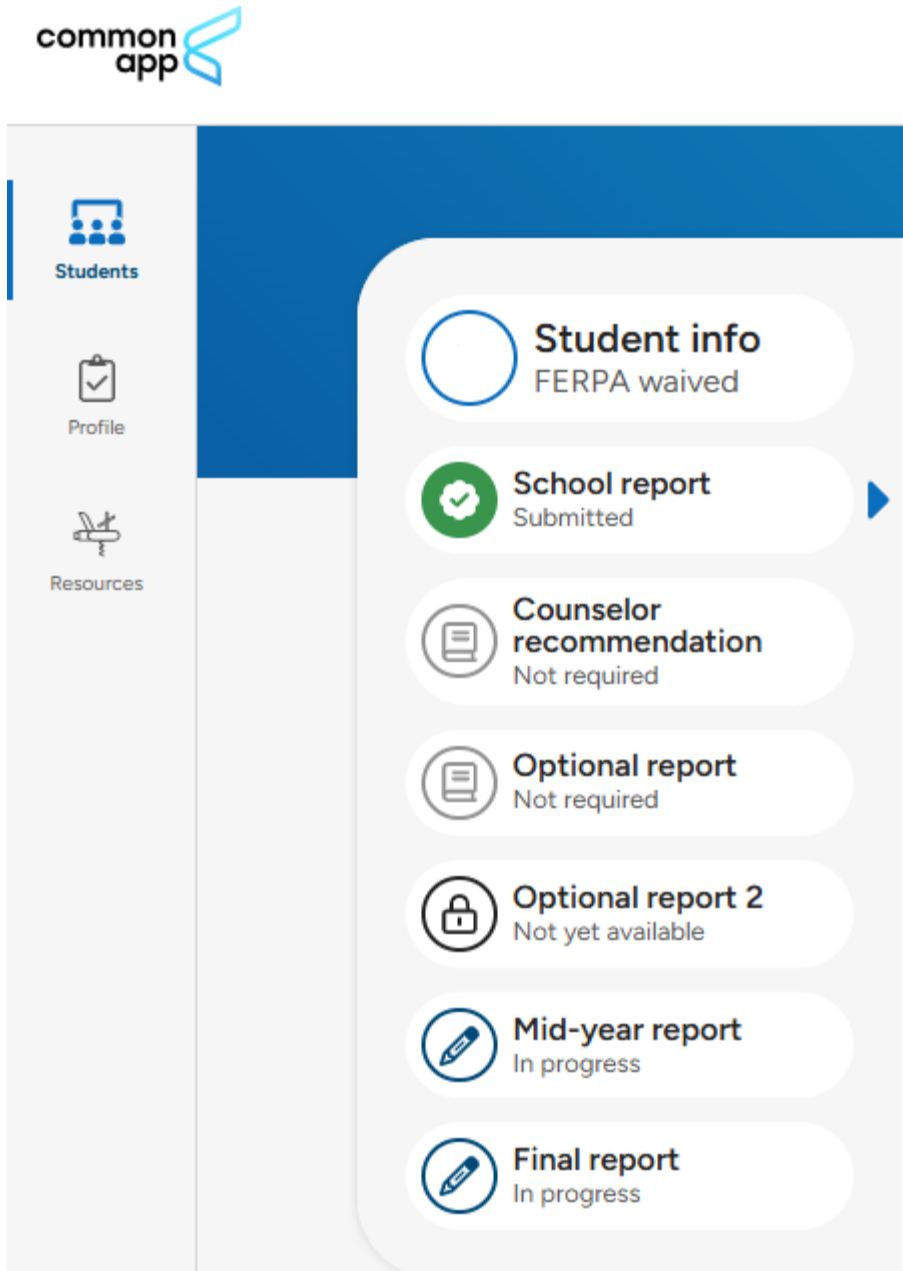
[Invite Recommenders](#)

✓ Counselor

Your school is using Overgrad for transcripts, school reports, and teacher recommendations. Please contact your counselor directly and they will provide instructions specific to your school regarding these documents. If your counselor wishes to submit forms via mail, you can download forms that can be completed on paper and mailed to each institution to which you apply.

[Download PDF Forms](#)

CommonApp LOR(continued)



Requesting Transcripts

- Most transcripts will be submitted on behalf of the student once they add their counselor to the application platform, i.e., Common App, Coalition, etc.
- All other transcript requests, must go through Scrib Order. This includes NCAA, GAFutures, sent to an individual, technical schools, etc. Counselors are not permitted to send a transcript via email.
 - <https://fultonga.scriborder.com/applicationCurrent>

Deadlines & Expectations

- Students will have 15 school days prior to their application deadline to request the following:
 - Transcripts
 - Letter of Recommendations
 - Counselor Evaluations
- Students who fail to meet this deadline may receive a generic/informational letter of recommendation from their counselor.
- Admissions committees strongly prefer students waive their right to view letters of recommendation and counselor evaluations.
- Counselors use university deadlines to prioritize counselor-related document submissions. Students may submit prior to counselor/teacher documents are submitted.

Scholarships and Financial Aid

- Scholarships will be posted to the NHS Counseling website. Check often!
- Financial Aid Night will be held on **October 23rd, 2025**. The FAFSA application will open in October 2025.
- Research scholarships on the internet
 - www.scholarships.com
 - www.fastweb.com
 - <https://bigfuture.collegeboard.org/scholarship-search>
 - <https://www.gafutures.org/hope-state-aid-programs/>
- Contact colleges directly about financial aid and scholarship opportunities. Colleges award many renewable scholarships. Ask about criteria, procedures and deadlines.
- A great site to aid in completing the FAFSA, learn more about eligibility, types of aid, and more is:
<http://studentaid.ed.gov/>
- If assigned a temporary social security number upon enrolling at NHS, please contact Ms. Woolstenhulme/Ms. Elliott and report your official social security number. This is required to be eligible for HOPE/Zell Miller Scholarship.

HOPE Scholarship

- Partial tuition covered – varies by year
 - Payment amount for private & public colleges and universities can be located on www.gafutures.org/hope-state-aid-programs/
- Eligibility Requirements
 - Graduate from an eligible high school
 - Meet HOPE/Zell Miller US citizenship or eligible non-citizen requirements
 - Be a legal resident of Georgia
 - GPA of at least a **3.0** (calculated by GSFC) in core classes and world language
 - Academic Rigor: **Four** classes that are academically rigorous
 - <https://www.gafutures.org/media/ks5f5zw5/rigor-course-list-09252024.pdf>

Zell Miller Scholarship

- 100% of tuition covered
- Must meet all the requirements to be eligible for the HOPE Scholarship, plus:
 - Graduate from an eligible high school
 - GPA of at least a 3.7 (calculated by GSFC)
 - SAT: min. 1200 combined critical reading score and math score (single administration)
 - ACT: min. composite score of 26
 - **SAT/ACT scores MUST be submitted directly to GSFC by the student to be considered*
- **OR**
 - Be the Valedictorian or Salutatorian of your graduating class

HOPE/Zell Miller Scholarship

- **GPA Calculation Process**
 - You must create an account on www.GAFutures.org in order view and track your preliminary HOPE/Zell Miller GPA.
 - NHS automatically sends transcripts electronically to GSFC for calculation at the end of each semester.
 - GSFC calculates HOPE/Zell Miller GPA in January and June
 - Your final GPA will be sent directly to applied colleges/universities from the GSFC
 - Please contact the GSFC directly with all questions
- **Apply for the HOPE/Zell Miller Scholarship**
 - Apply for the HOPE/Zell Miller or complete FAFSA starting December of your senior year.
 - Free Application for Federal Student Aid (FAFSA) www.fafsa.ed.gov
 - Georgia Student Financial Aid Application System (GSFAPPS) www.gafutures.org/hope-state-aid-programs/state-aid-applications/
- **For Additional Information on HOPE/Zell Miller**
 - Contact Georgia Student Finance Commission (GSFC)

Counselors are not responsible for calculating the HOPE GPA
A 2.9999 GPA does NOT qualify you for HOPE



NCAA Eligibility Clearinghouse

- If you are planning on participating in intercollegiate athletics at an NCAA Division I or II institution, you must register with the NCAA Initial-Eligibility Clearinghouse
- Access the registration materials by visiting the NCAA website www.ncaaclearinghouse.net
- When taking the SAT/ACT, enter 9999 for scores to be sent to NCAA
- You will need to send your official transcript by requesting your transcript through Scrib Order.

**Students and parents are responsible for determining NCAA eligibility to Division I and Division II schools
Counselors are neither responsible, nor allowed to determine eligibility.**

Application Information

- Size of Class of 2026: 393
- Class Rank: We do NOT Rank (We do not have deciles, percentiles, etc.)
- GPA = Numeric Scale: 100; Weighted
- Additional information can be found at <https://www.northviewcounseling.com/juniors-seniors>
- Counselor Information: <https://www.northviewcounseling.com/about>

Senior Information Sheet

- All seniors need to submit a Senior Information Sheet by **September 5, 2025**. This document can be found at www.northviewcounseling.com under "Quick Links" on our homepage.
- Please attach as a .doc or .pdf and email to your counselor.
- Counselors will use your information sheet for letters of recommendation for any path you choose.
- Be thorough in your responses!



- Transitioning to Schoolinks
- Fulton County required tasks – Bridge Bill
- College and Career search
- Aptitude tests
- More information will be sent out once the platform has been launched
- You can find the app in Classlink

Resources

Northview Counseling Department

www.northviewcounseling.com

*This presentation and an FAQ will be available on our website

Common App

<https://www.commonapp.org/>

SAT- School Code: 111148

www.collegeboard.com

ACT

www.act.org

College and Career Exploration

www.bigfuture.collegeboard.org

GAFutures

(HOPE/Zell Miller Scholarship Info)

www.gafutures.org/

SOAR

- <https://soarfamily.org>

Follow us
on Social
Media!

@northviewcounseling



Questions?

Please scan the
QR Code to
submit
questions:



We will post the FAQ next week on our Northview Counseling website

SOS

Signs of Suicide

- SOS Signs of Suicide High School Program - MindWise
- If you signed the opt out form, please wait in the lobby until the bell rings